



Wavestore Installation Instructions

V6

Updated April 2018 at Version 6.12

Table of Contents

1. Introduction	3
2. Upgrading from a previous V6 version to a later V6 version	4
2.1 Checking that the server can be upgraded to a later V6 version	4
2.2 Downloading the software.....	5
2.3 Upgrading the Server.....	6
3. Installing Wavestore VMS onto a completely new system	9
3.1 Download the software	9
3.2 Using RUFUS to produce a Wavestore Installation USB.....	9
3.3 Changing the BIOS to enable Upgrading using USB Keys.....	10
3.4 Installing from DVD	12
3.5 Installing Wavestore V6	13
3.6 Configuring the Graphics Driver	14
3.7 Logging into the Server for the first time.....	15
3.8 Setting up the Server Storage	17
3.9 Setting the unit IP Address.....	18
3.10 Obtaining and Installing a Version 6 Licence.....	18
4. Supported server hardware for Wavestore V6	20
4.1 Supported Motherboards and units	20
4.2 Supported RAID Controllers and HBA Cards	20
4.3 Supported Graphics Cards.....	20

1. Introduction

Please note that there are 2 methods to install Version 6:

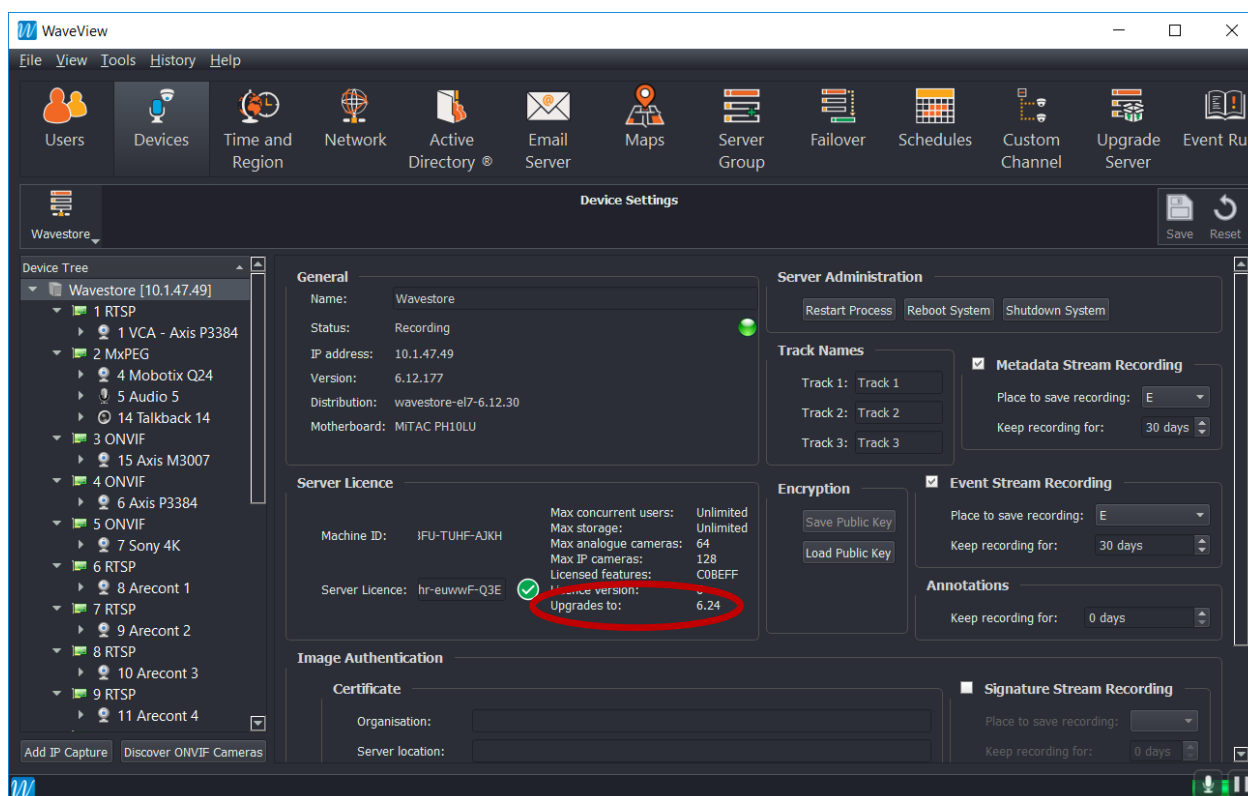
- To upgrade from a previous V6 version to a later V6 version (i.e. v6.10 to v6.12), please refer to Section 2.
- To install Wavestore V6 onto a completely new system, please refer to Section 3

2. Upgrading from a previous V6 version to a later V6 version

2.1 Checking that the server can be upgraded to a later V6 version

Important: Before upgrading a server please ensure that it is licensed to have that version installed. If you upgrade a server to a version that it is not eligible for then it will become unlicensed after the upgrade. This would result in all the cameras not being recorded and no live images will be available to WaveView clients. To check what version a server is licensed to be upgraded to, log on using an install password and go to **View -> Setup -> Devices**

In the **Server Licence** section, look for the **Upgrades to** value.

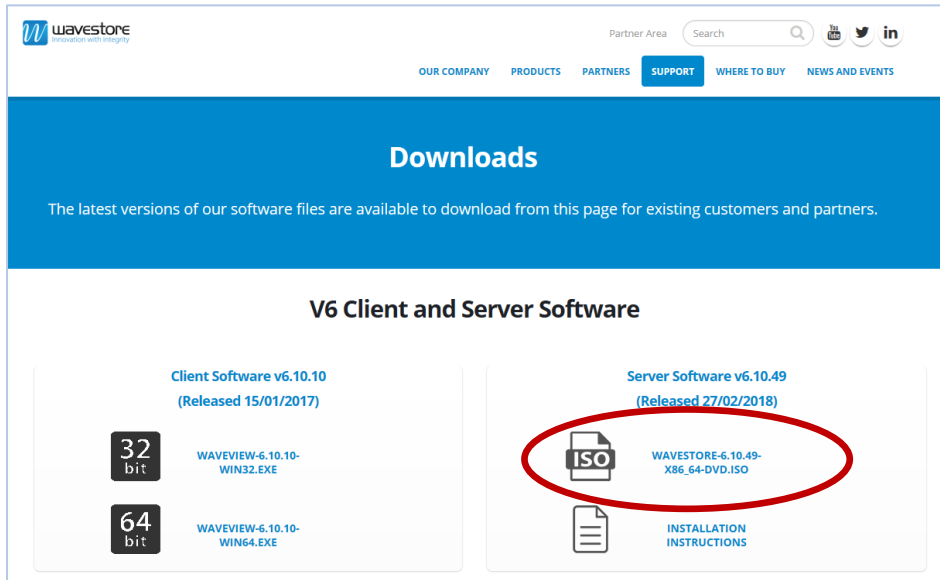


In this example the server can be upgraded to version 6.24. Do not attempt to upgrade this server to a later version without first purchasing an Upgrade Bundle from your Wavestore supplier.

If in doubt, please contact Wavestore for further information.

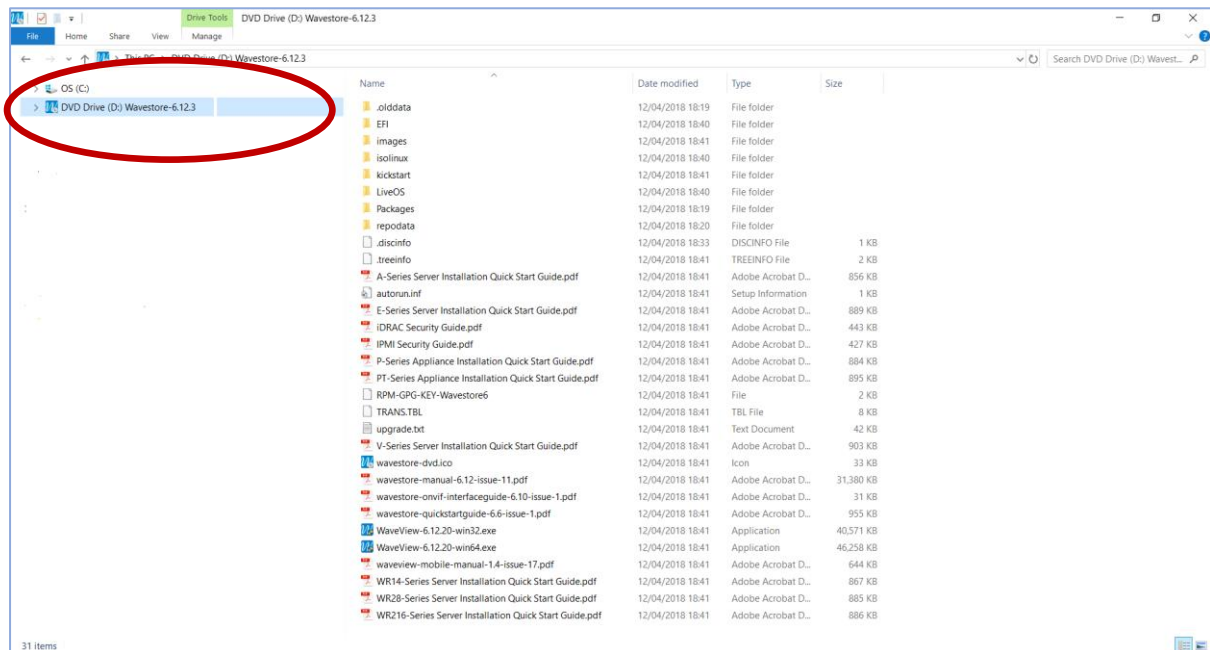
2.2 Downloading the software

Download the required version of Wavestore V6 Server Software from www.wavestore.com/downloads



This will download an ISO image file.

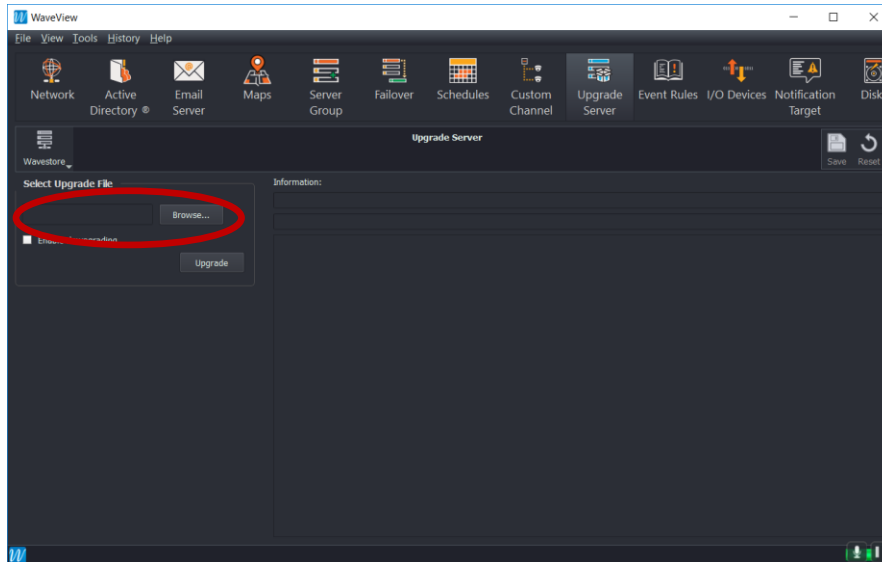
In Windows 10, the ISO can be “mounted” simply by double-clicking. It will then be shown as a DVD would be:-



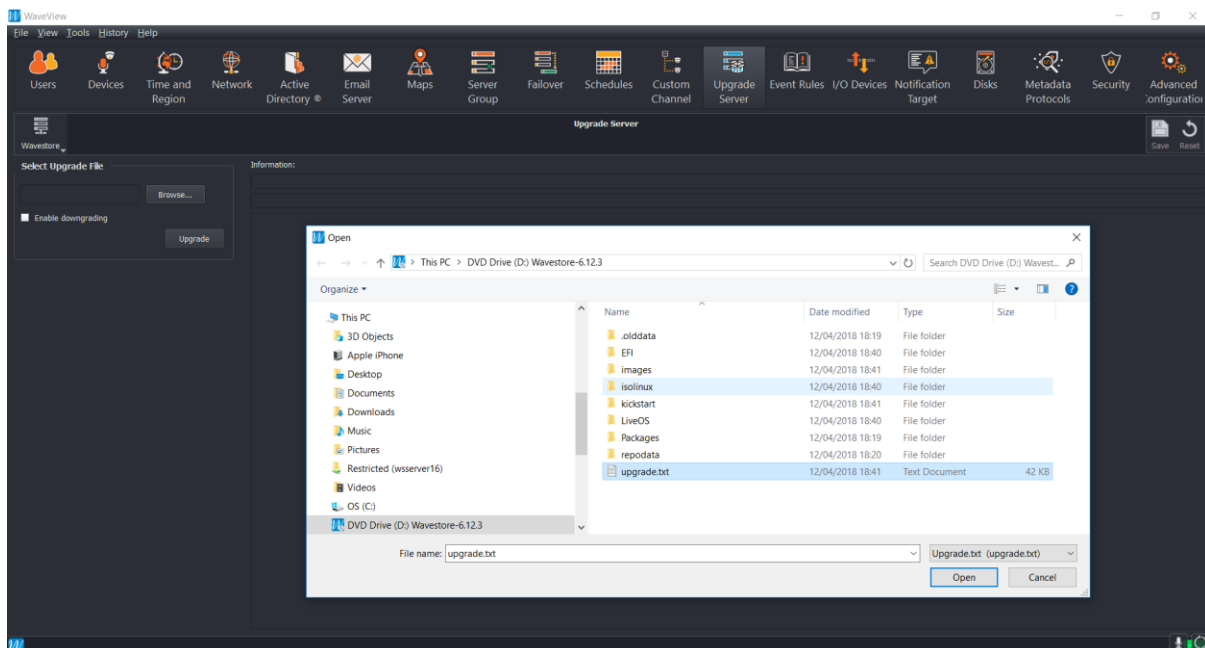
2.3 Upgrading the Server

Using the WaveView client software installed on the same machine that has the Wavestore software ISO mounted, log on to the server as an install user.

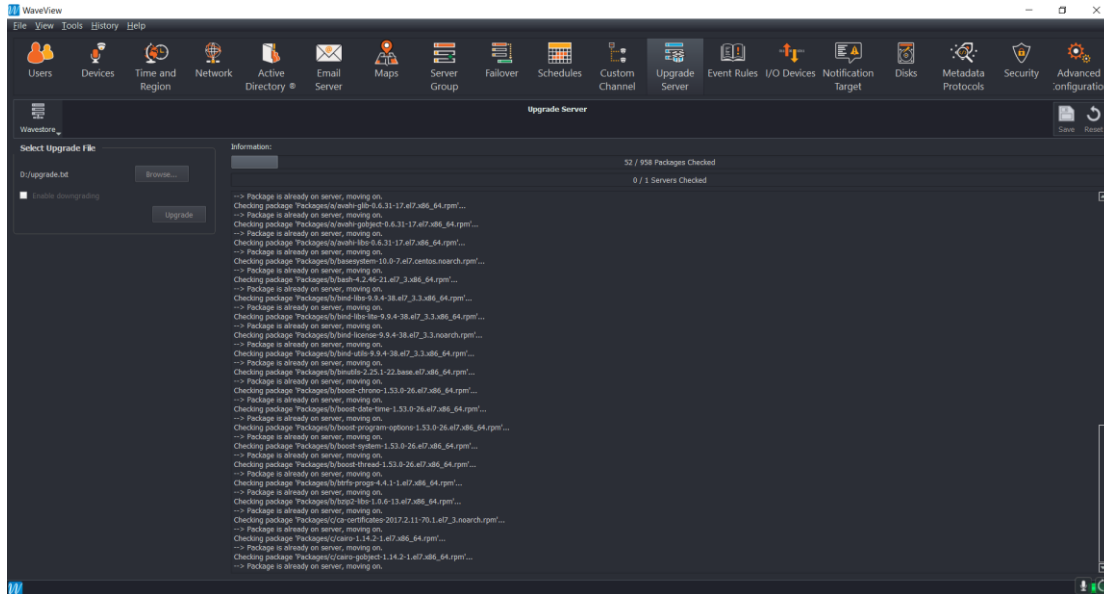
Go to **View -> Setup -> Upgrade Server**



Click **Browse** and navigate to the **upgrade.txt** file on the mounted DVD. Press **Open**

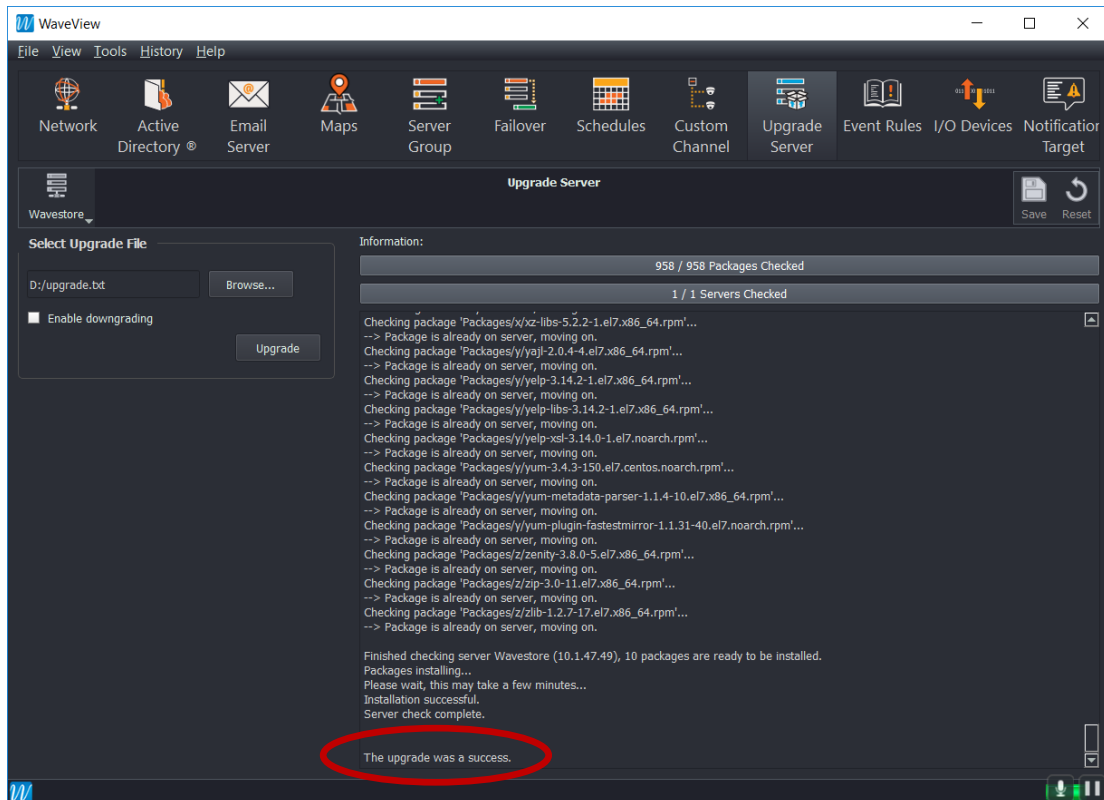


Then press the **Upgrade** button. The upgrade will then begin.



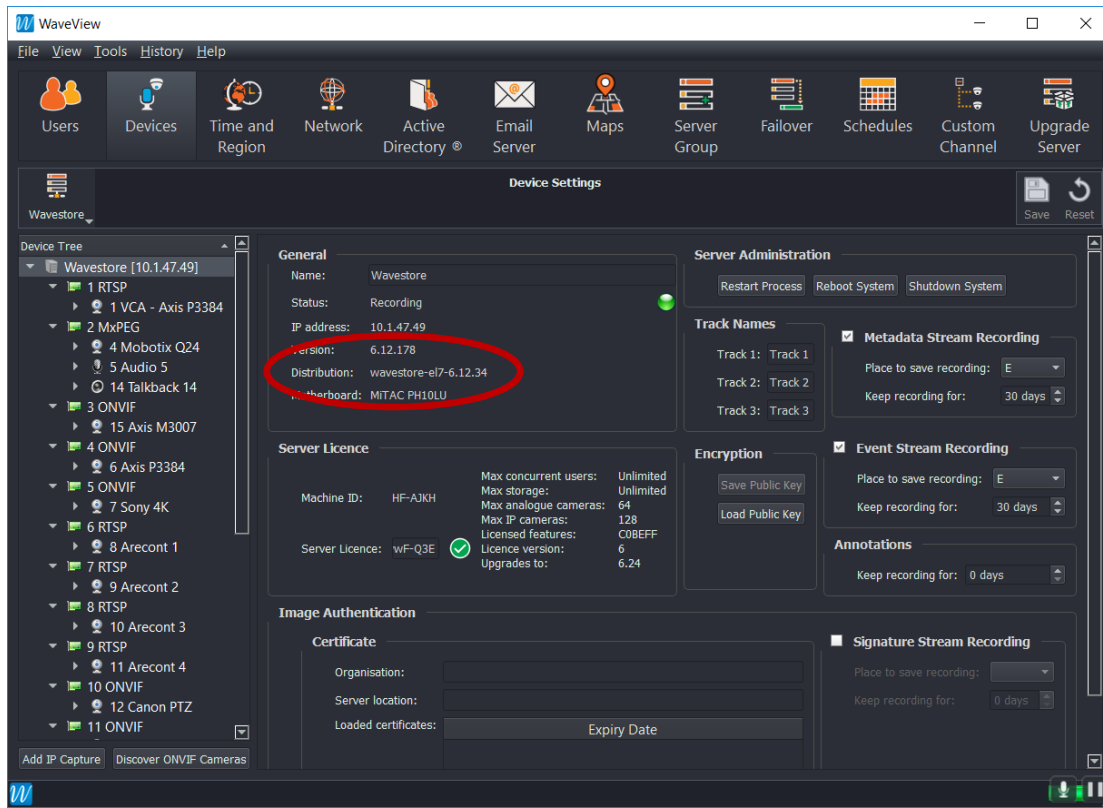
The packages requiring installation will be uploaded and then installed. When the upgrade has completed, a status message showing that the upgrade was a success will be shown.

Note that recording and viewing is still happening up to this point.



The server service will then restart, causing a very brief interruption in the recording and live viewing.

The server will then be running the upgraded software as is shown on the **Device Settings** page:-



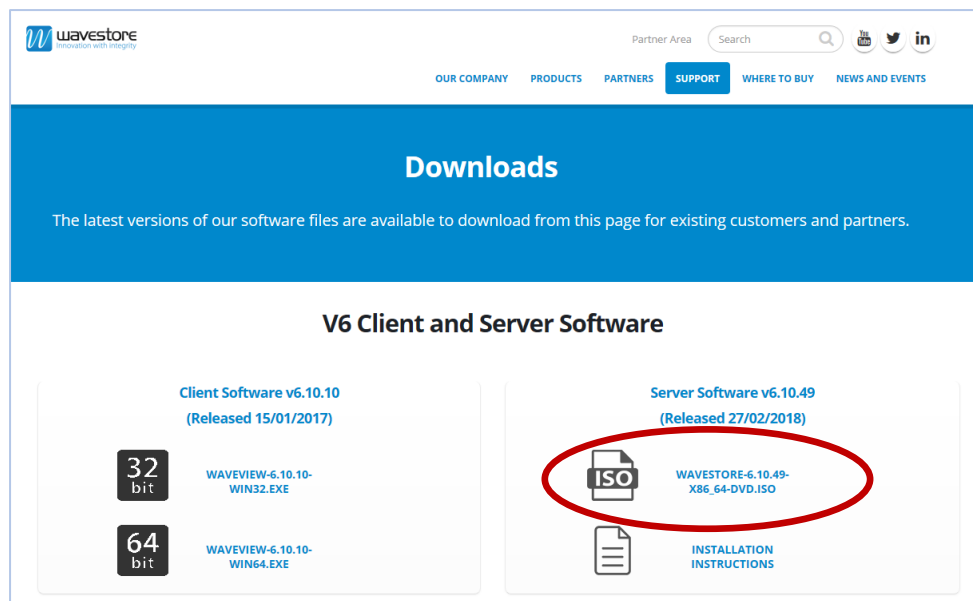
The **Distribution** shows the ISO version installed, here it is **6.12.34**.

3. Installing Wavestore VMS onto a completely new system

Important: Use of these instructions will remove all data from the disk onto which Wavestore is being installed, including any existing operating system.

3.1 Download the software

Download the required version of Wavestore Server Software from www.wavestore.com/downloads



This will download an ISO image file.

This can either be burnt to a DVD or, often more conveniently, can be imaged onto a USB pen-drive (minimum 4GB) using a utility such as Rufus.

3.2 Using RUFUS to produce a Wavestore Installation USB

1. On a Windows machine, download Rufus from www.rufus.akeo.ie
2. Run Rufus
3. Plug in the USB. Rufus should recognise the USB and populate the "Device" box
4. On Rufus: "Format Options"/"Create a bootable disk using" and select "ISO Image"
5. On Rufus: click the icon to the right of the above text and select the ISO
6. On Rufus: [Start] to start the write to USB
7. Select "Write in ISO Image mode (recommended)" and OK if asks about deleting files on USB
8. It will take around 5 minutes to create the bootable USB.

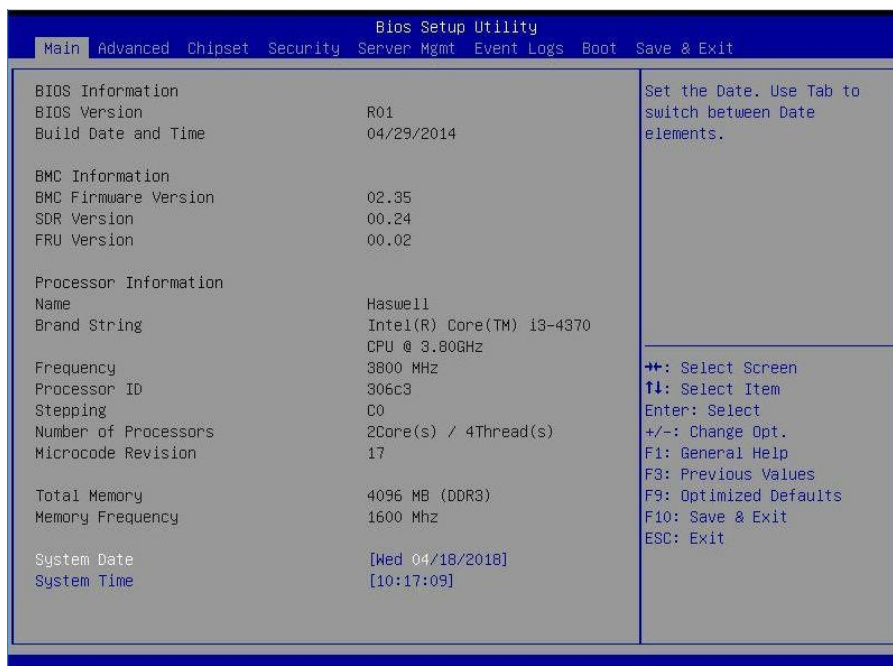
3.3 Changing the BIOS to enable Upgrading using USB Keys

Because Version 6 can be installed using a USB key it will be necessary to be able to boot the hardware from USB. This must be set to Legacy, rather than UEFI Boot. This will likely require BIOS changes to be made to accomplish this. Below are the settings needed on the Gigabyte GA-6LXSV motherboard BIOS screen and Boot menu.

To enter the BIOS setup screen, please restart the machine and when this message appears on screen, press the **<F2>** key when prompted.



The following page will appear:-



Go to the **Advanced** page and under **USB Configuration** set the **Legacy USB Support** to **Enabled**.



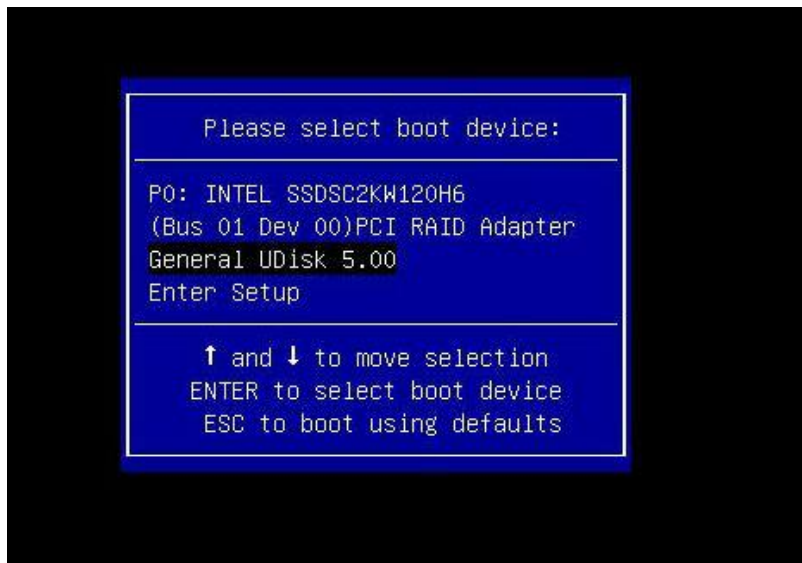
Press **ESC** to return to the main BIOS setup screen.

If using a USB key, insert the prepared USB key into a USB port of the machine. Save these settings by pressing the right arrow key to select **Save and Exit** and press Enter and press **Y** to confirm.

The machine should then be rebooted and when the following screen appears, enter the Boot menu screen by pressing **<F10>**.



The Boot menu will appear.



Select **General UDisk** and press **Enter**. The unit will now boot from the prepared USB disk.

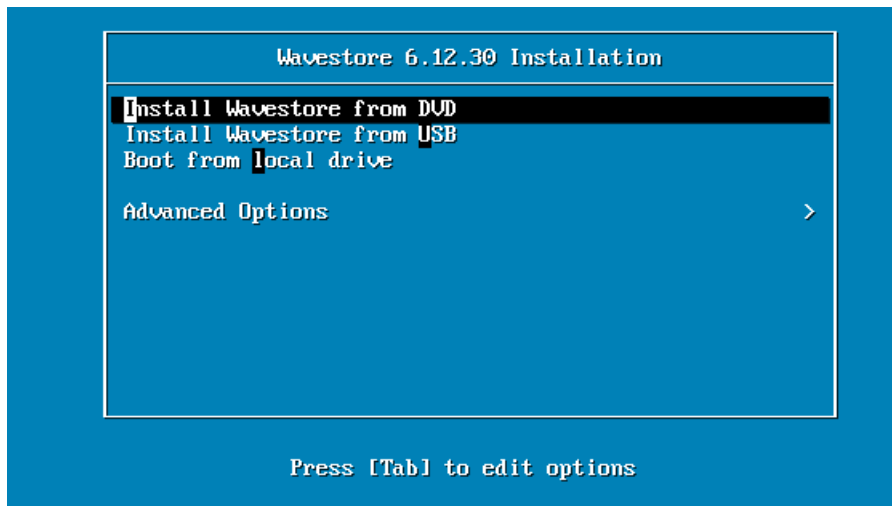
3.4 Installing from DVD

If using a DVD then the only BIOS setting that may be required is to enable Legacy Boot, not UEFI.

Insert the disk into the drive and restart the machine and select booting from CD/DVD.

3.5 Installing Wavestore V6

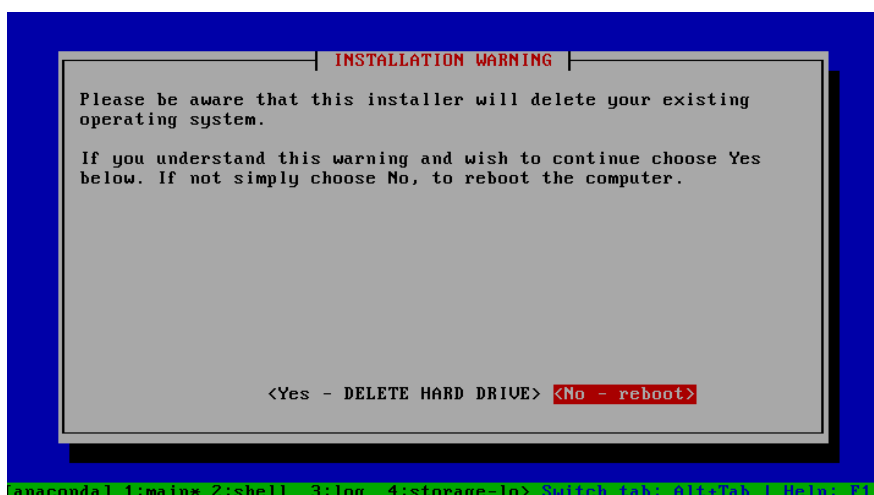
The unit will now restart and you will be presented with the menu below:-



Select **Install Wavestore from USB** or **Install Wavestore from DVD** as required, and press **Enter**.

(Note that if you are intending to install Wavestore onto the same disk as is being used for video data storage, e.g. in the case of a NUC-type device, this will require use of the Advanced Options)

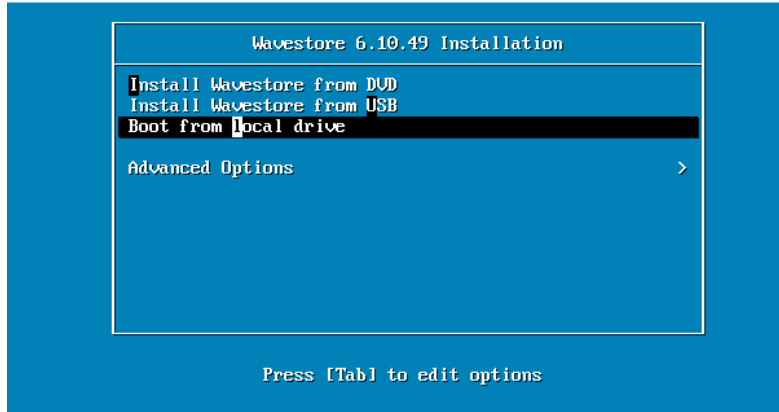
You will be given an Installation Warning that the existing operating system will be deleted. You are also advised to remove all attached external drives. Select Yes - **DELETE HARD DRIVE** and press **Enter**.



The unit will now install the Version 6 Wavestore Server and WaveView client software. This will take approximately 20 minutes to complete and you will be asked to reboot at the end of the process.

3.6 Configuring the Graphics Driver

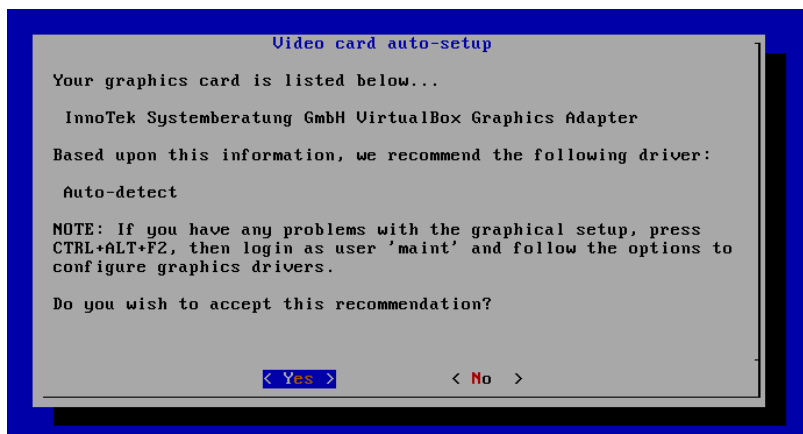
After the restart the following menu will then appear again:-



Remove the USB key and then select **Boot from local drive** as shown, then press **Enter**. The unit will now restart and because you have reinstalled the complete system you will be presented with the First Boot Welcome screen which allows the selection of the Graphics Driver:-



Press **OK** to continue and the graphics card will be automatically detected. (Note your unit may have a different driver selected).

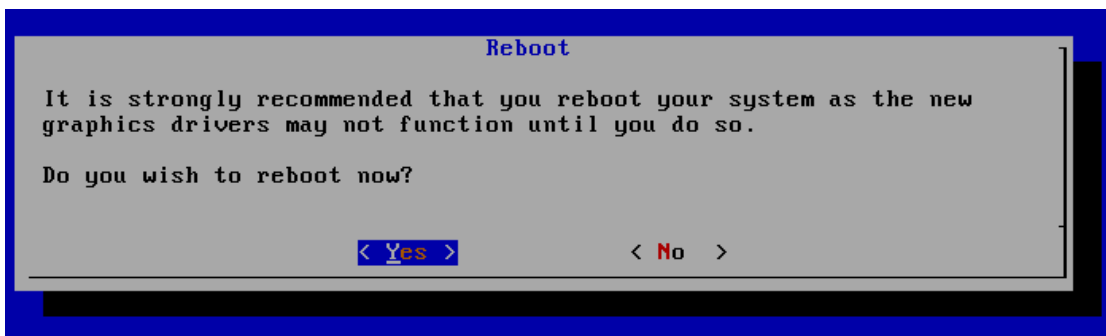


At **Do you wish to accept this recommendation?** Select **Yes** and press **Enter**.



Press **OK**

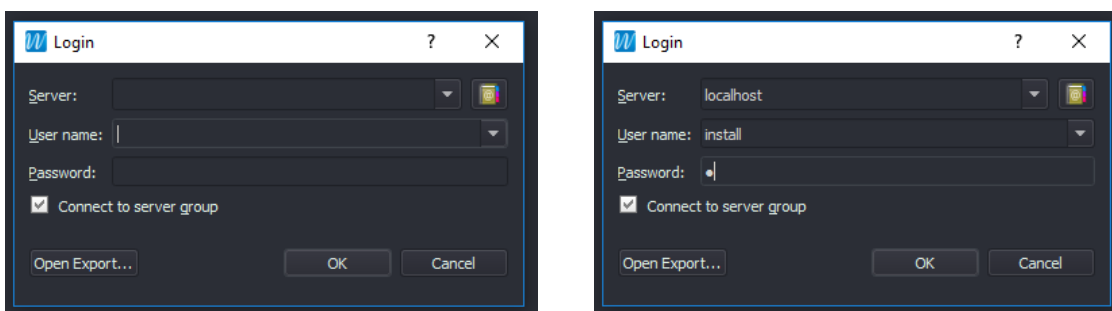
You will then be asked to reboot the unit to initialise the graphics driver.



Select **Yes** and press **Enter**. The unit will now restart, and software upgrade process is complete.

3.7 Logging into the Server for the first time

You will be presented with the WaveView client login screen:-



To log in, enter the **Server** as **localhost** and **User name** as **install**.

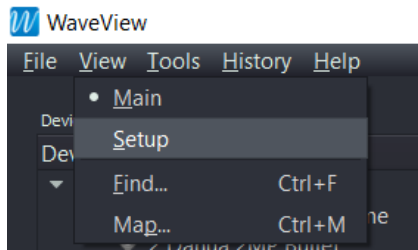
The default Password is **a**

You will then be asked to change the password from its default. Enter the password you want to use for the **install** account.

When you have done that you can enter the setup screens to set up the unit storage.

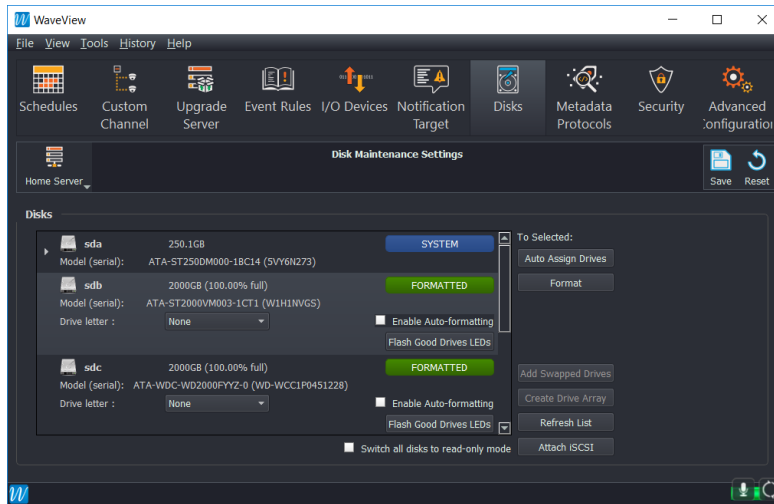
You can also set up an IP address to connect to the unit from a remote WaveView client machine. This is optional but certain things, like obtaining the Machine ID so that you can get a licence is more easily done using a remote client.

To enter the setup screen, select **View, Setup**



3.8 Setting up the Server Storage

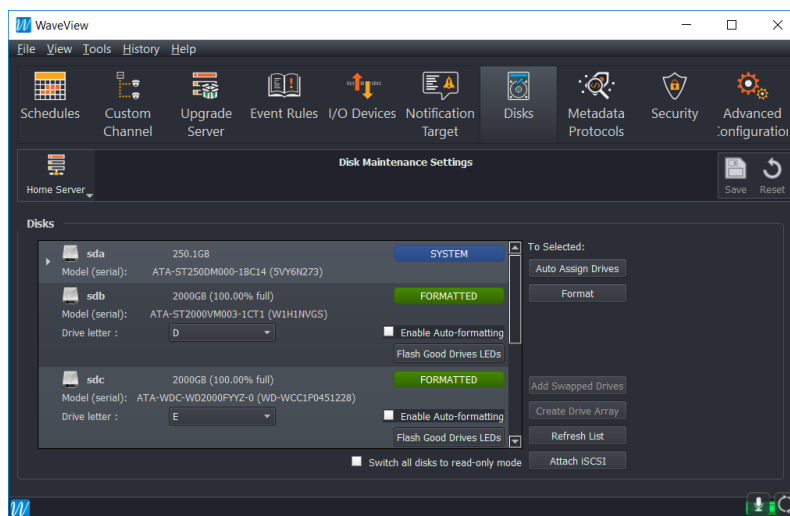
To set up the unit storage select **Disks**



In this example the hard drive(s) are shown as **sdb** and **sdc**.

You may only have one drive fitted, which will be **sdb**

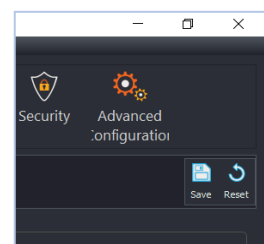
The drive should be shown as Formatted but the Drive letter will be shown as **None**.



Use the Dropdown list to set **sdb** as **Drive letter: D**

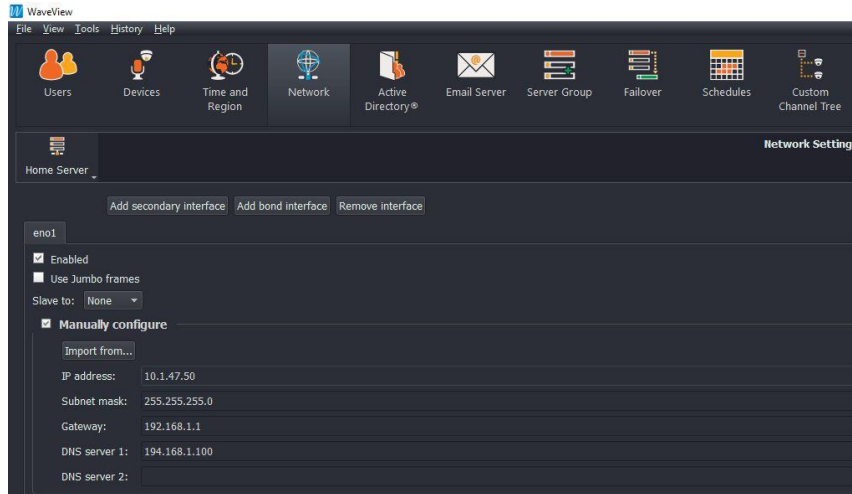
Use the Dropdown list to set **sdc** (if fitted) as **Drive letter: E** as shown:-

Save these settings by pressing the **Save** button in the top-right corner.



3.9 Setting the unit IP Address

To set the IP Address select **Network** and set the IP Address, Subnet Mask, Gateway and DNS as required to suit your network.

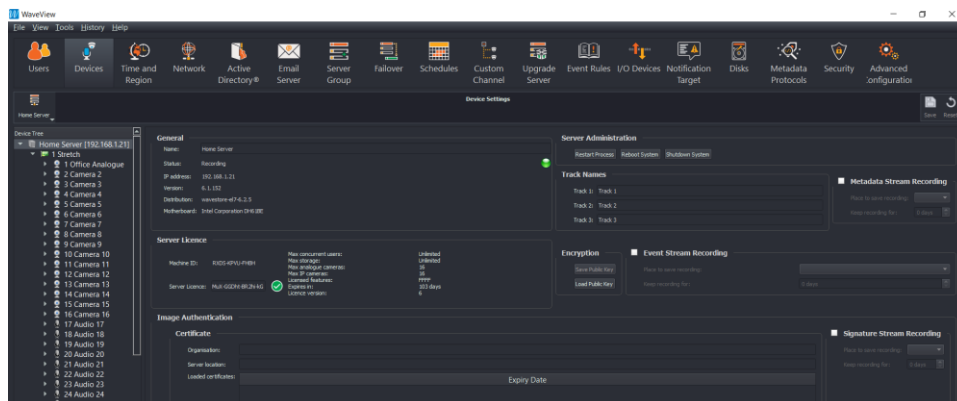


Save these settings by pressing the **Save** button.

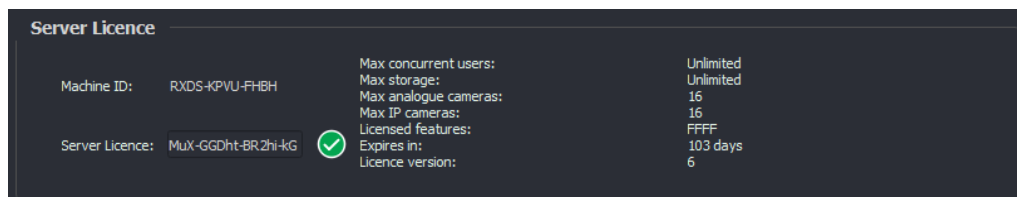
3.10 Obtaining and Installing a Version 6 Licence

The unit will need a Version 6 licence. This is done by providing the unit's **Machine ID** to your supplier. They will then provide a licence which will enable the required capabilities on the unit that you have specified.

To obtain the unit's Machine ID, select **Devices**



The **Machine ID** is shown in the Server Licence section of this page.

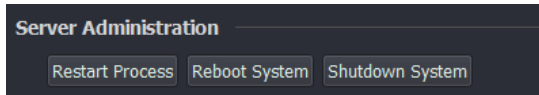


Note the 12-character Machine ID (if using a remote client this can be highlighted using a mouse and copied to the clipboard in the usual way. E.g. **RXDS-KPVU-FHBH**

Email this Machine ID to your supplier and the relevant Wavestore licence will be returned.

When you have this, return to the **Devices** page, copy the licence into the appropriate field, press **Save** and you will then be prompted to restart the server process.

Press the **Restart Process** button in **Server Administration**:-



After the restart, the capabilities that are licensed on the server will then be listed:-

Max concurrent users:	Unlimited
Max storage:	Unlimited
Max analogue cameras:	16
Max IP cameras:	16
Licensed features:	FFFF
Expires in:	103 days
Licence version:	6

Your unit is now ready for use, running the latest Wavestore Version 6 Software.

4. Supported server hardware for Wavestore V6

Although a wide-range of hardware is compatible with Wavestore's VMS, the following hardware has been fully tested and is classed as 'supported' for use with Wavestore V6.

We recommend you fully test Wavestore's VMS if using any other hardware prior to deployment.

4.1 Supported Motherboards and units

Mitac PH10LU
Gigabyte GA-6LXSV
Supermicro X11SSH-LN4F
Supermicro X11SSL-F
Supermicro X11SSV-Q
Intel NUC C5CPYH



4.2 Supported RAID Controllers and HBA Cards

3-ware 9750 family
LSI MegaRAID 9361 family
LSI SAS 9300
Supermicro SA2LP-MV8



4.3 Supported Graphics Cards

GT730 Graphics Adapter
GT 1050/1060 Graphics Adapter family

